

WHY LETHBRIDGE

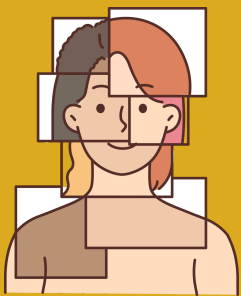
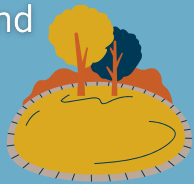
Over 3,000 students graduate each year from our two world-class post secondary institutions, Lethbridge College and the University of Lethbridge.



The average cost for a single detached home in Lethbridge is under \$400K, the most affordable of any Census Metropolitan Area in Alberta.

***2023 Annual Figure/Alberta Real Estate Association**

There are over 130 parks and natural areas in Lethbridge. These areas include dog parks, spray parks, walking trails and playgrounds.



Immigration contributed nearly half (48%) of the population growth in Lethbridge in 2023. Over the past 10 years the population in Lethbridge has grown by 20%.

***Statistics Canada, Table 17-10-0149-01**



Lethbridge averages over 320 days of sunshine per year, and experiences some of the mildest winters anywhere in the province.

Almost half of Lethbridge residents (49%) have an average commute time of under 15 minutes.

***2021 National Census Figure**



There are 4 UNESCO World Heritage Sites located within 2 hours of Lethbridge.



Economic
Development
Lethbridge

